

Office Hours with NanoString at Brown University

Wednesday, August 14 | 10:00am - 4:00pm

Brown University, 70 Ship Street, Room 401

[Schedule a consultation here.](#)

Explore Advanced Spatial Profiling at Brown University

Discover the capabilities of NanoString’s GeoMx Digital Spatial Profiler and CosMx Spatial Molecular Imager. Located at the Genomic Core Lab, these platforms offer comprehensive profiling—from the entire transcriptome to over 570 protein targets and high-resolution, single-cell analysis of more than 6,000 transcripts. Ready to revolutionize your research?



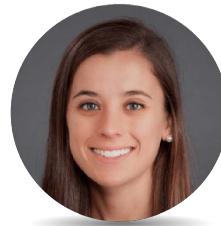
Please Join us on Wednesday, August 14th to discuss your current or prospective projects in spatial transcriptomics or proteomics.



Whether you’re new to spatial solutions or looking to advance your research, we’re here to kickstart your projects and tailor solutions to your research needs.



Questions? Please contact:
Ozge Casgal-Getkin, DVM, MA
Sr. Spatial Account Manager
ozge.cagsal-getkin@bruker.com



Questions? Please contact:
Elizabeth Stirling, PhD
Field Application Scientist
elizabeth.stirling@bruker.com